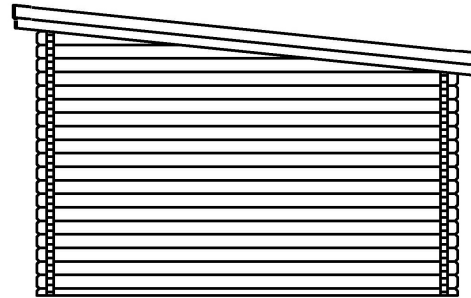
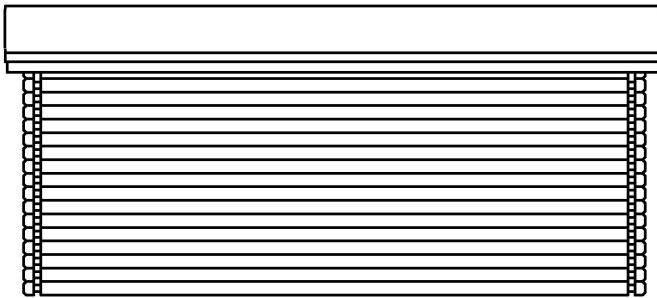
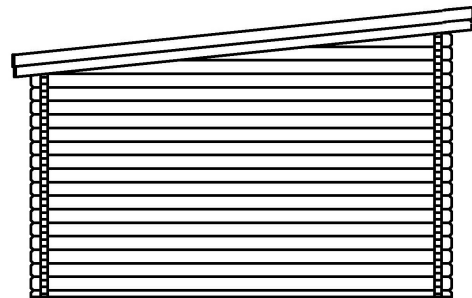
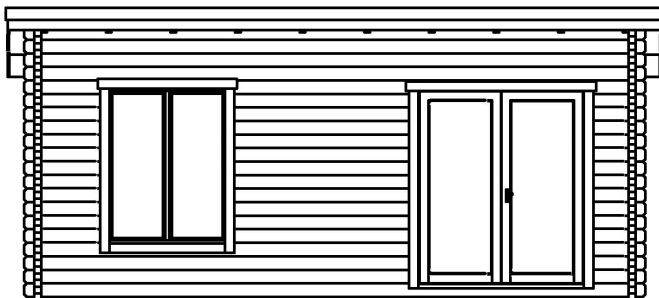


Luoman Koppelo

710-2

Building instructions



Takuunumero:
Garantinummer:
Garantinummer:
Garanti nummer
Warranty number:
Le numéro de garantie:

Pidä numero tallessa.
Behåll numret.
Bewahren Sie die Nummer auf.
Hold nummer.
Keep the number.
Le numéro de garantie.



BUILDING INSTRUCTIONS

Foreword

Dear customer,

Thank you for choosing this light log product. Please read the instruction manual carefully in full before beginning the installation and keep the instructions for further reference. Drawings of wall constructions and part lists are specific to each model's own separate instructions.

Warranty terms for this product:

The warranty is void if:

- Assembly instructions are not followed by customer.
- Changes have been made to the parts by customer.
- The package has not been stored properly after delivery to customer.
- The assembled product has not immediately been properly taken care of by painting or other preservative product.
- The foundation is not made properly, or according to our instructions.

The warranty is valid if:

- A part has a manufacturing defect
- A part is not fit for its intended use.
- A part does not meet the information given prior to purchase.
- A part lasts for a shorter time than can be assumed.

Please check with your local building authorities if planning permission is required before beginning construction.

Receiving and storing the goods

Machined logs and other parts have been packed into protective wrapping. If the item will not be constructed immediately, it should be kept indoors or otherwise well-protected until assembly. The package should be kept away from the ground in order to avoid absorbing moisture and be stored on a level base.

Transport defects and missing parts must be recorded on the waybill. The delivery is checked against the waybill when unloading. At the same time, possible transport defects are identified. Defects and missing parts are recorded on the waybill and immediately reported to the provider.

For package and transport technical reasons, logs and other timber are placed in the package so that they form reasonably sized bundles. Therefore, the logs may not be packaged in the assembly order.

If possible, store the windows and doors indoors.

Please check the contents in full with the help of the part list and contact your retailer immediately if something is missing or defective.

Please sort the parts near the planned building area leaving enough space for working.

1. Check the content of the packages

2. Use the part list at the end to register any missing or damaged parts.
3. Contact your retailer if needed.

Procedure in case of defects or faults

If you do have something to complain, please immediately contact the place of purchase to make a written claim via the re-seller. Inform the reseller about the guarantee number that can be found on the package. We cannot process a claim without guarantee number. If the assembling will be begun or continued, it means that the customer has accepted the parts. The producer and the re-seller reserve rights to decide about all the arrangements concerning the claim. They may also visit the building site if they think it is necessary. The producer or the re-seller is not responsible to pay any indirect costs or damages due to a defected or missing part.

Description of material

Timber is natural material which has some self-evident and ordinary aspects like knots, groups of knots, splits, crazing in knots, resinous and twisting. This means that loose knots or knot holes at edges, resin faults, knot and drying splits and crazing not influencing to the construction are acceptable. Also twisted but usable parts are such. Plane hits and wane at the back side of roof and floorboards are always acceptable if the faults are not seen at the visible side when assembled.

Assembly of the building

The builder is responsible for ensuring that the building is fit for its intended use. Constructing this building requires expertise and thorough knowledge concerning the building and construction regulations. The builder is expected to comply with good building practices. If needed, seek advice from experts and construction sector professionals.

The assembly instructions include a parts list, drawings of wall constructions and the required detail drawings.

To facilitate the identification of the log, the code of the log is marked in the cut-outs of some logs. Some logs do not have the code, which means that they have to be identified on the basis of their size and cut-outs. For production technical reasons, some logs have been drilled although the holes are not needed.

Foundation

The foundation of the building should be made on soil that will not move during frozen ground conditions or sink.

There are several different foundation methods; the foundation should be made in accordance with the foundation conditions. Seek advice from an expert when choosing and planning the foundation method. A separate foundation plan should be prepared, when necessary. The building must be fastened to the foundation. Please bear in mind that the walls must be 5 mm outside the surface of the plinth in accordance with the drawings.

The measure drawing for the beam foundation is attached to the instructions.

Log frame

Settling of structures is a natural part of log construction, and this should be considered when planning and assembling the structures. The settling of log structures must be taken into

Spare log

One **spare log** is included in the delivery. This spare log is intended to be used if a log has a machining defect or is otherwise damaged or of the wrong size. The spare log must be cut to size at site. If needed, a cut-out will be made to the spare log at site. The log can be cut to several spare parts. **Note!** *The cut-out is worked with a handsaw and, for example, a chisel. Take the measurements and example from a completed cut-out.*

Sauna

When building a sauna, the builder must consider the regulations concerning sauna stoves and chimneys. The requirements set by the sauna stove and chimney have not been considered in the structures. Sufficient ventilation of the sauna must be ensured. Holes for the air valves must be made to the outer walls.

Special attention must be paid on the surface treatment of floor boards inside the sauna.

Additional insulation

The delivery does not include thermal insulation. When using thermal insulation, follow the related instructions and regulations. It is particularly important to pay attention to the vapour barrier and ventilation, if they are required.

Protection treatment

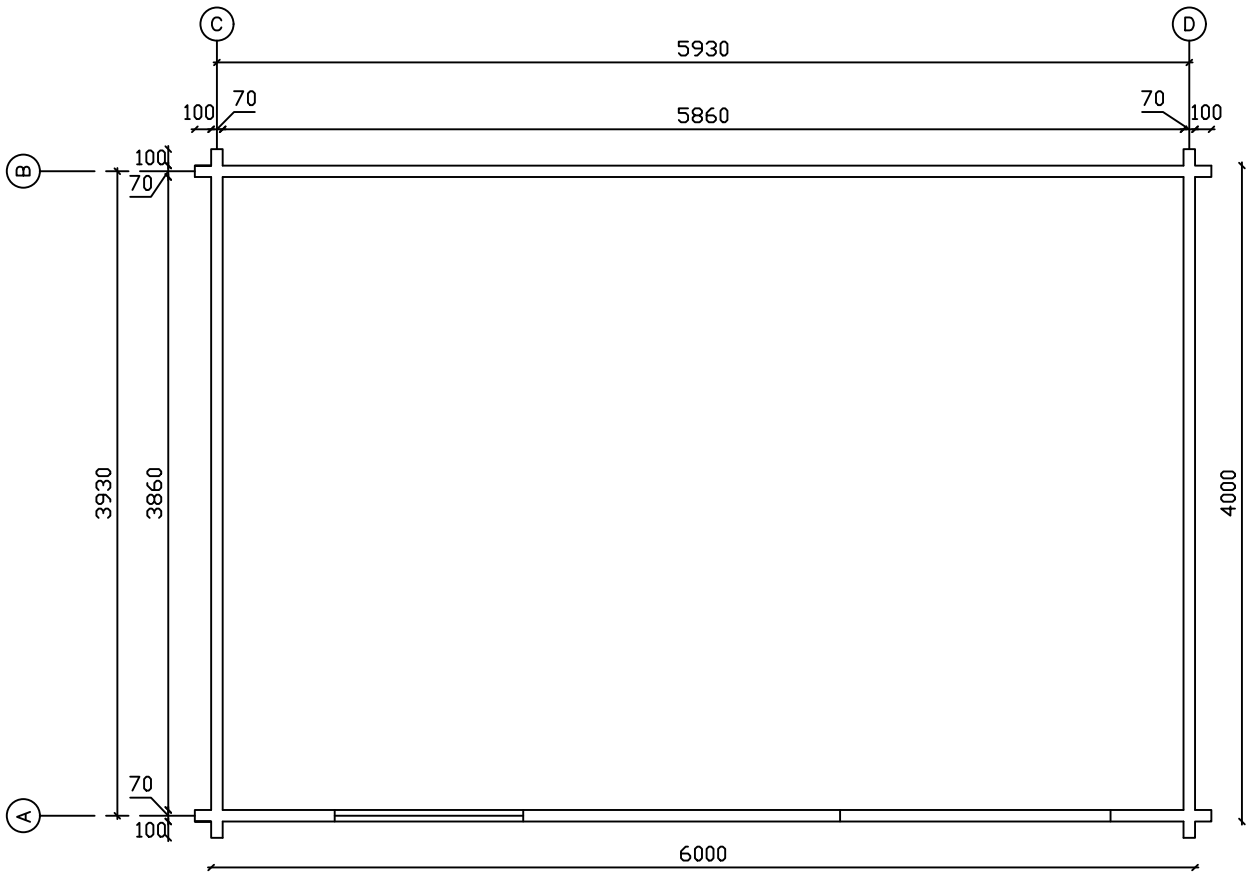
The timber used for the products LUOMAN products has not been treated. Protection treatment of the building must be performed immediately after erecting the cabin as soon as the weather is suitable for it. The first treatment should be done with a with a colorless wood preservative that prevents the formation of mould and blue stain. Also, the interior of the building must be treated. Only use wood preservatives that are suitable for log surfaces. Ask for advice of suitable products from resellers of wood preservatives.

Small black or blue mould spots may easily be formed both on treated and untreated wooden surfaces in certain conditions. A mould spot is not harmful for the wood nor a defect. It is only an aesthetic problem that can usually be washed away similarly as dirt. It is also possible to sand the spots before the surface treatment.

Maintenance

Safe long-term use of the building requires regular checking, possible reparation of the fastenings and inspecting the condition of the parts. Pay special attention to the roof construction, its covering material, doors and windows, foundation fastenings, the protection against storm as well as surface treatment of any wooden parts. Failure to perform regular maintenance can cause damage to the building or a safety risk to its user.

Regularly inspect the condition of the protection treatment and re-new it when necessary. Inspect the bottom rails of the doors, windows and their frames, end surface of timbers and parts stressed by hard weather- or usage-related wearing. Check the functioning of doors and windows and adjust hinges when necessary. Check the silicon seals of doors and windows, renewing them when necessary. It is very important to make sure that underneath the building is well-ventilated. Also installing ventilation grills (not included) on top of the gable triangles is recommended to let moisture get out from the building.



Luoman Puutuote Oy
www.lillevilla.com

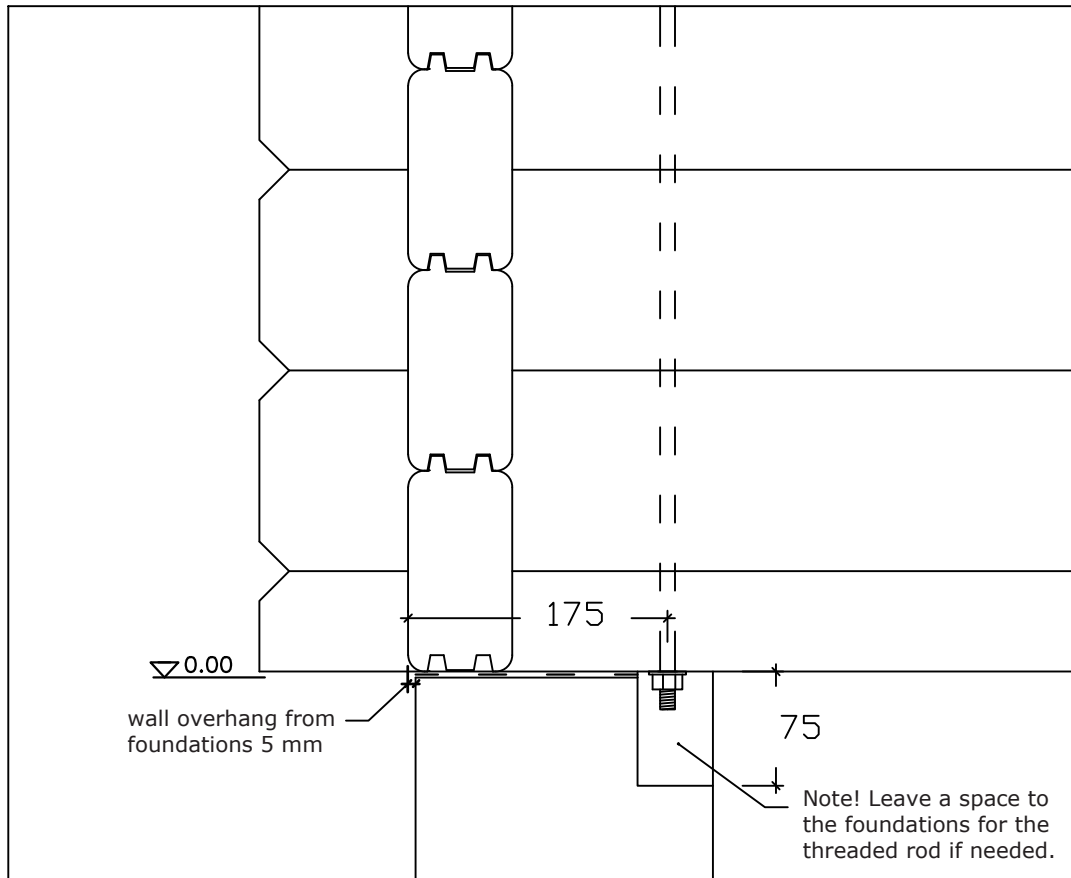


proj.
 Luoman 710-2 Koppelo

pvm./date

sisältö/description
 log frame dimensions

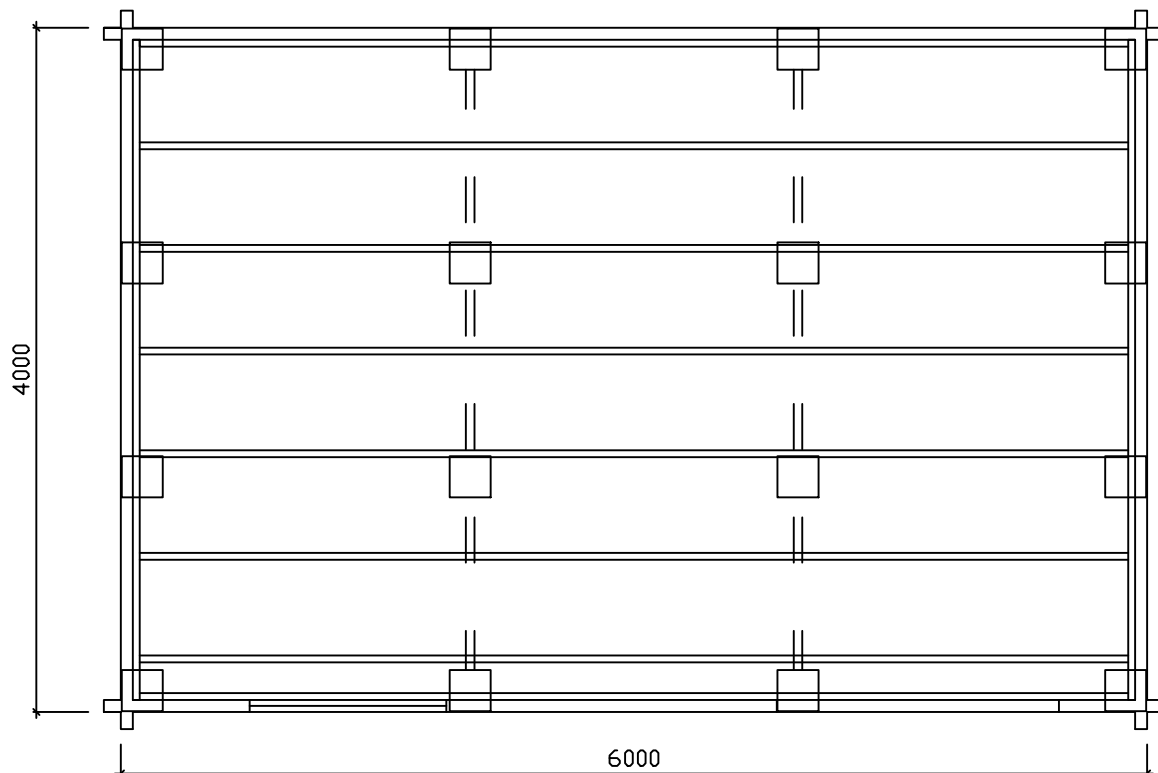
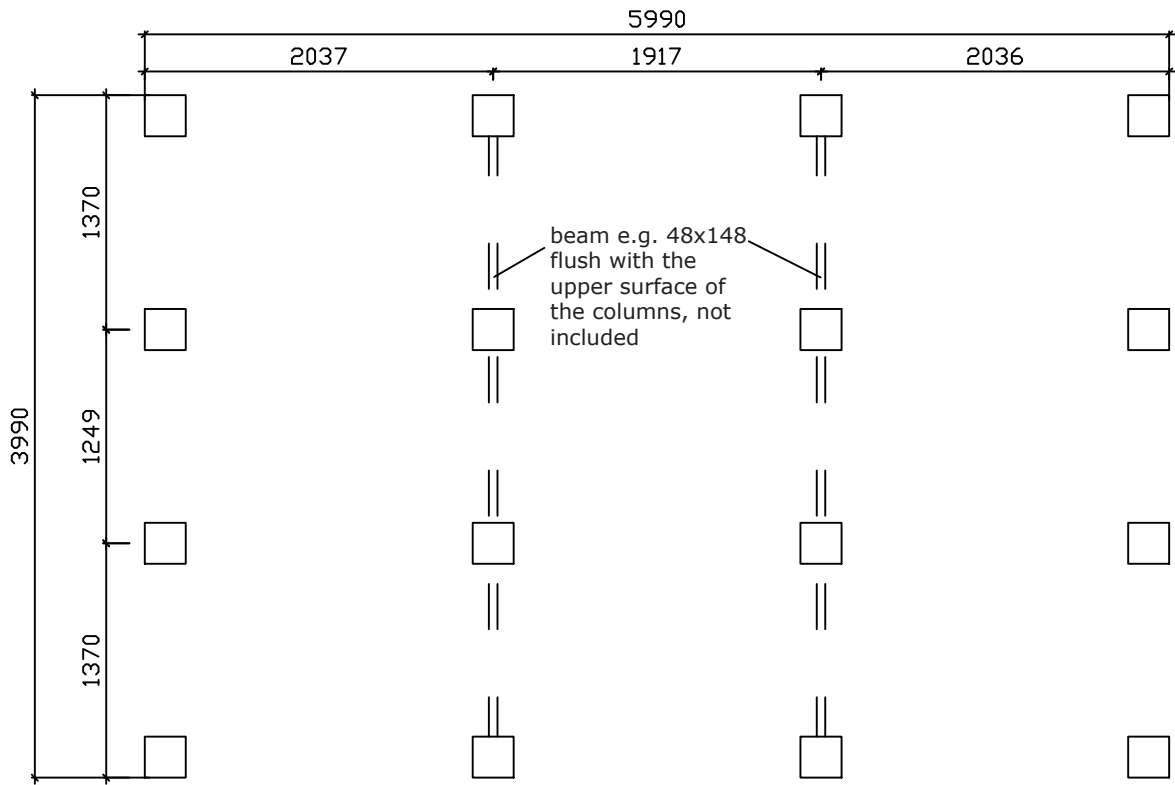
mittakaava/scale
 not in scale



Luoman Puutuote Oy
www.lillevilla.com



proj.	pvm./date
Luoman 710-2 Koppelo	
sisältö/description	mittakaava/scale
wall overhang, space for threaded rod	not in scale



Luoman Puutuote Oy
www.lillevilla.com



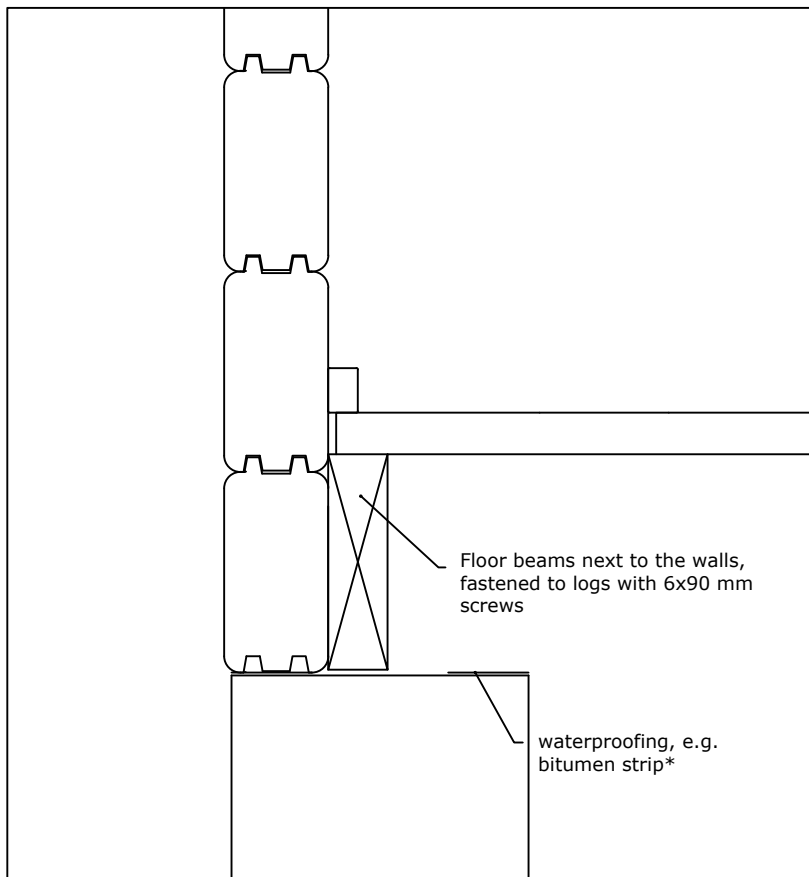
proj.
 Luoman 710-2 Koppelo

pvm./date

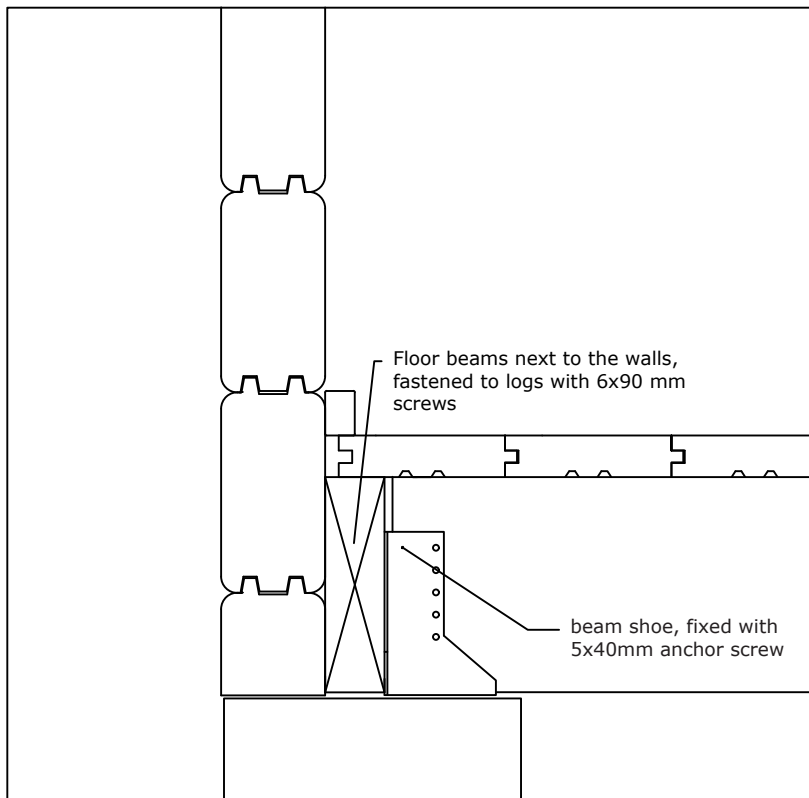
sisältö/description
 column foundations

mittakaava/scale

not in scale



* not included



Luoman Puutuote Oy
www.lillevilla.com



proj.
 Luoman 710-2 Koppelo

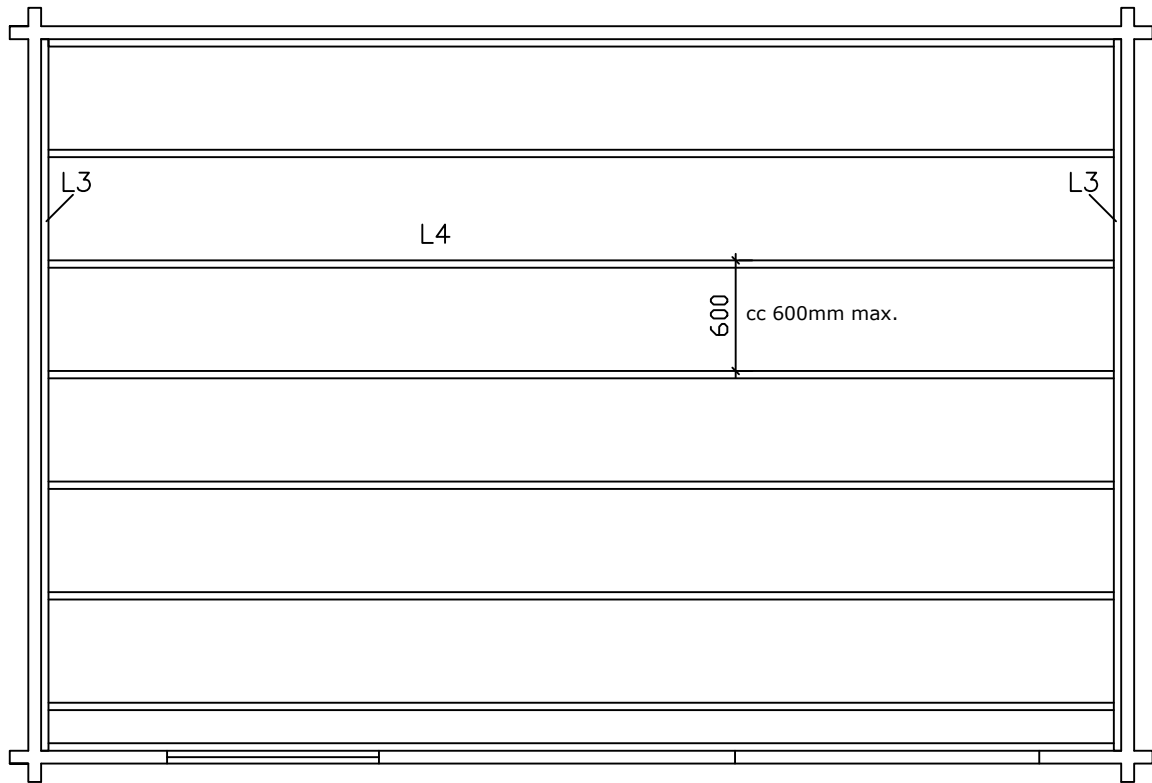
pvm./date

sisältö/description

mittakaava/scale

section, floor

not in scale



Luoman Puutuote Oy
www.lillevilla.com



proj.

Luoman 710-2 Koppelo

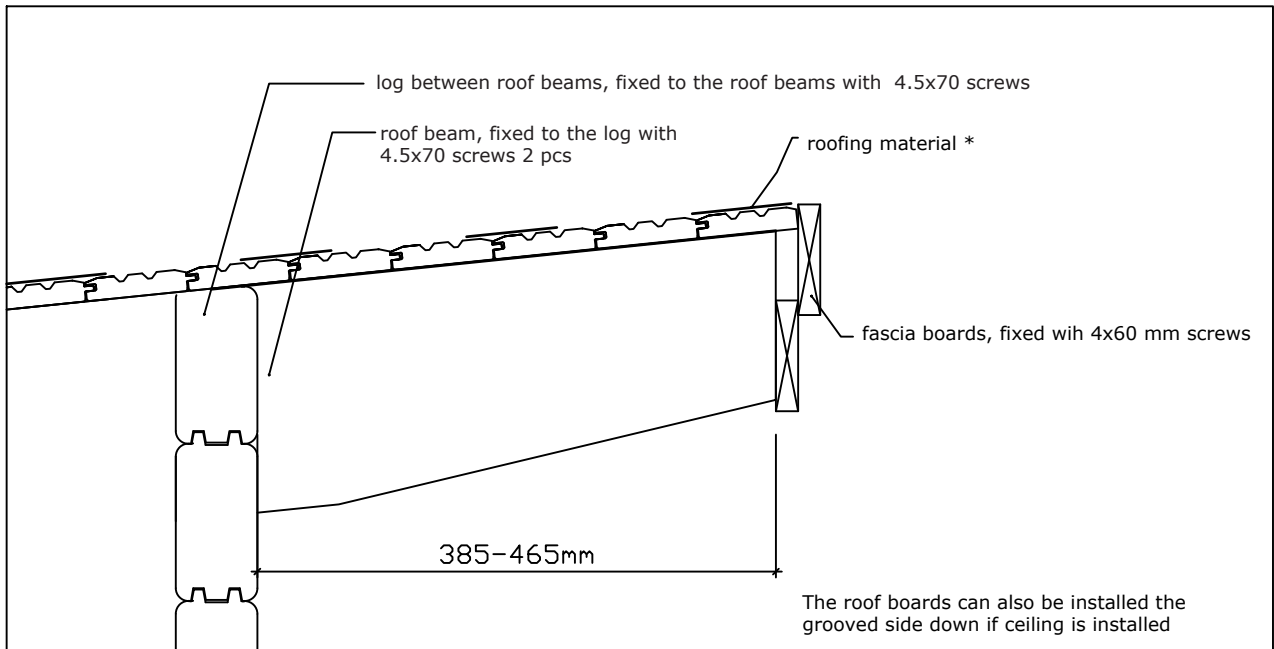
pvm./date

sisältö/description

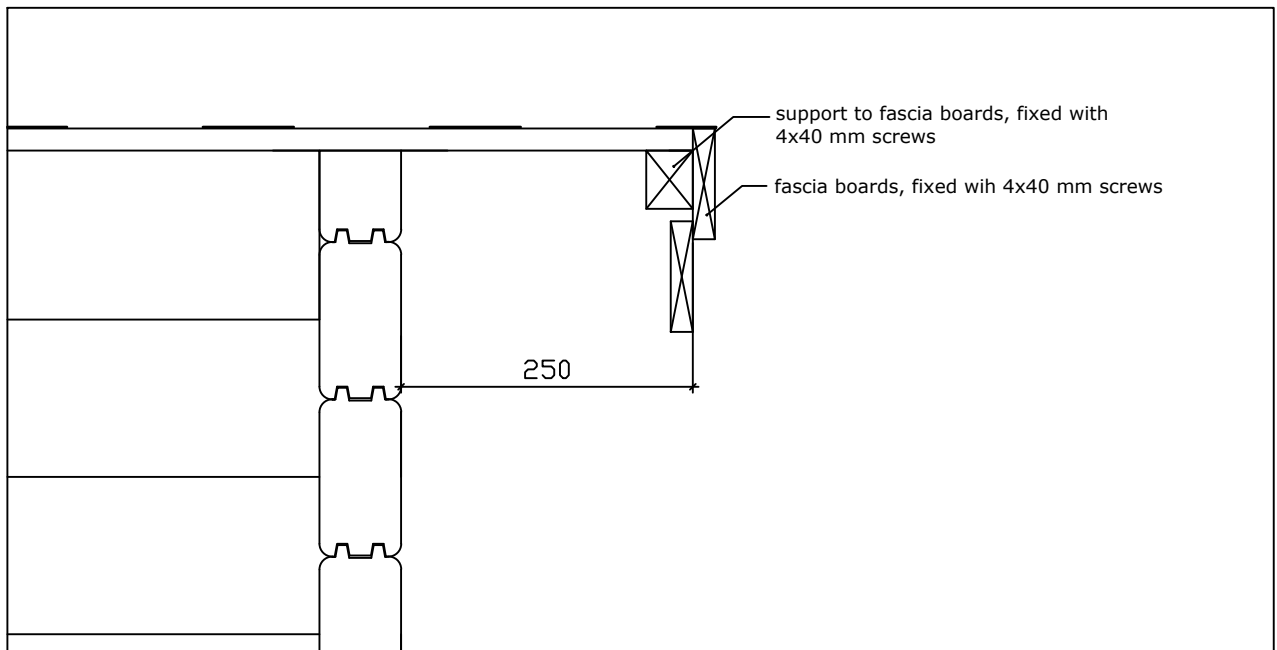
floor beams

mittakaava/scale

not in scale



* not included



Luoman Puutuote Oy
www.lillevilla.com



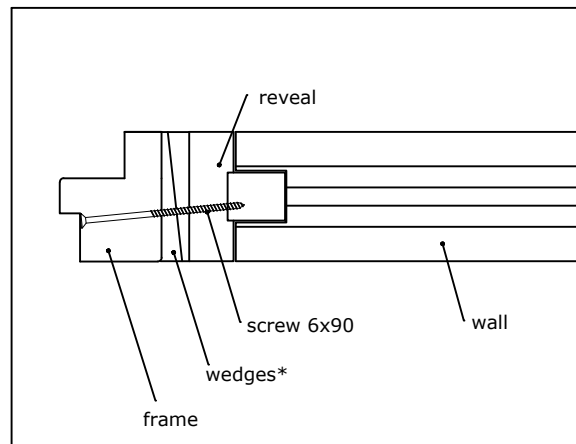
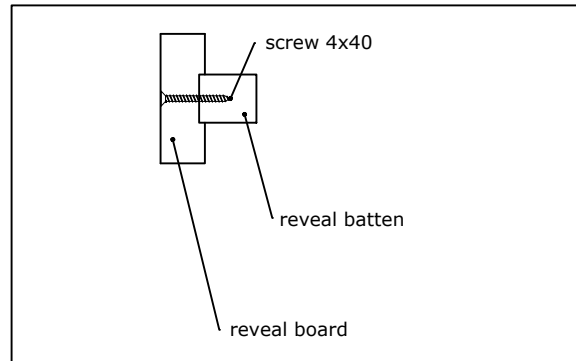
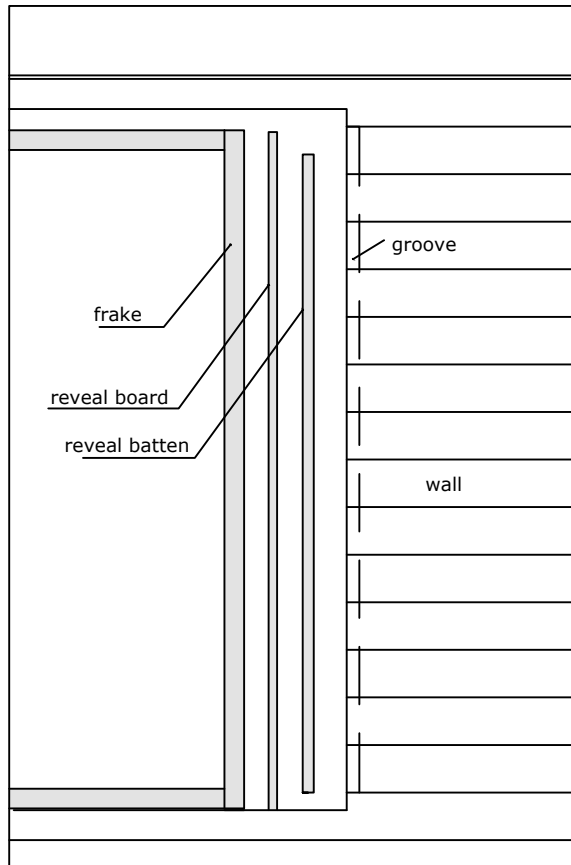
proj.
 Luoman 710-2 Koppelo

pvm./date

sisältö/description
 section, roof

mittakaava/scale

not in scale



* not included

The reveal is assembled from the reveal board and the reveal batten.
 Cut the reveal board and batten to right length.
 The length of the reveal board is the length of the frame.
 The length of the reveal batten is the length of the groove in the wall minus settling space.
 Install the reveal batten to the groove in the reveal board and fix the reveal board to the reveal batten with 4x40 mm screws about every 30 cm. Install the reveal in to the groove in the wall and fix it only to the lowest log.
 Install the frame or the whole window to the opening by using wedges and fix with 6x90 mm screws to the reveal. The screw must not touch the logs. Seal the gaps and install the frame boards.

Luoman Puutuote Oy
www.lillevilla.com



proj.
 Luoman 710-2 Koppelo

pvm./date

sisältö/description
 installing the reveals

mittakaava/scale

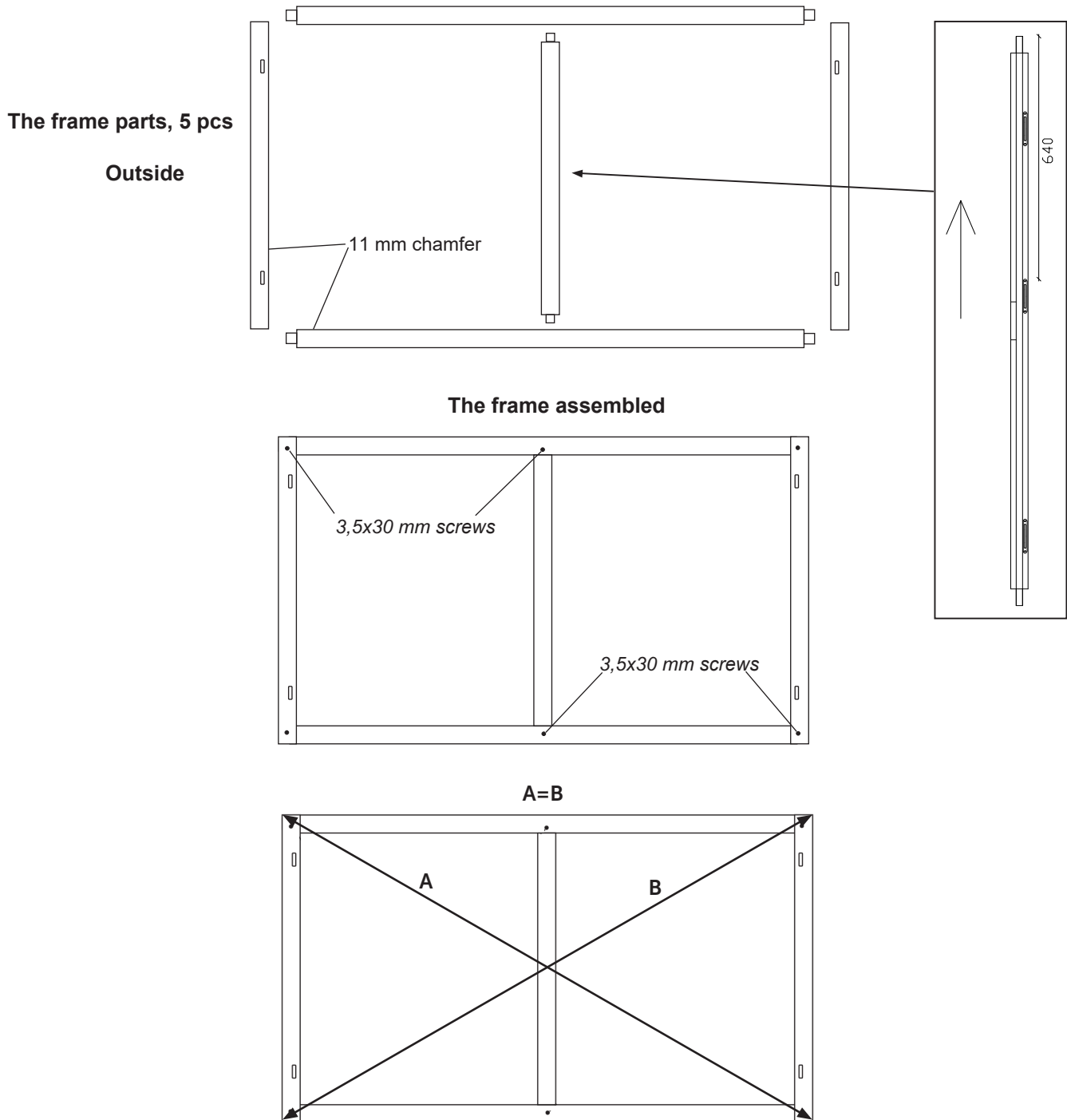
not in scale

Installing the window frame

The frame of the double window have to be assembled at site. The frame consist of 5 parts. Make sure that you assemble the frame according to the drawings; the 11 mm chamfer comes to center and the hinges come to the outside. Fix the frame parts together by using glue and 3,5 x 35 mm screws (pre-drill with a 3 mm drill).

Notice! You can adjust the windows by turning the hinges of the windows and/or the frame inwards or outwards if needed.

Lift the frame and the windows in place making sure they cannot fall. Lift the windows in place and check that they open and close properly. Make adjustments as told if needed.



Luoman Puutuote Oy
www.lillevilla.com

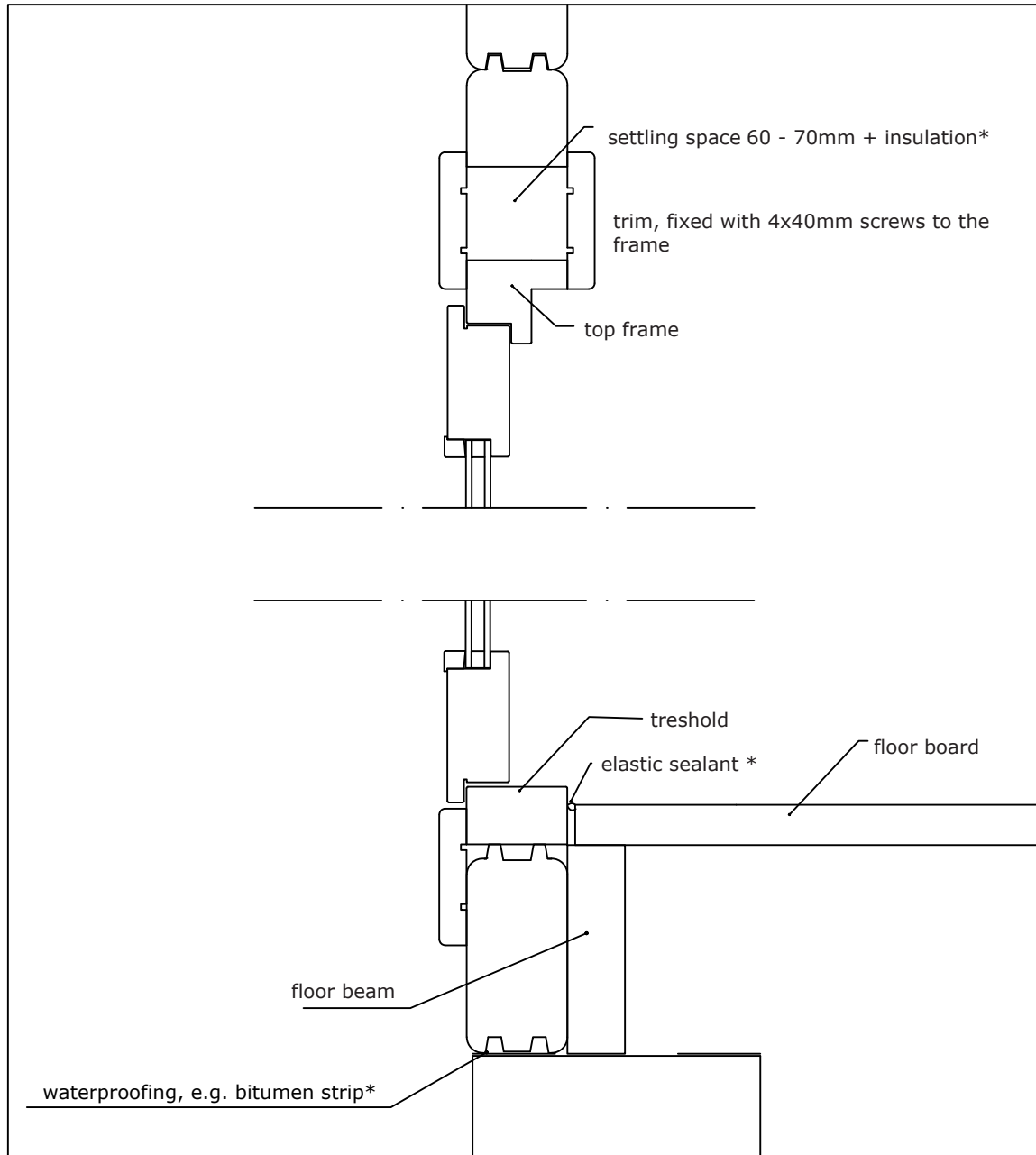


proj.
 Luoman 710-2 Koppelo

pvm./date

sisältö/description
 window frames

mittakaava/scale
 not in scale



* not included

Luoman Puutuote Oy
www.lillevilla.com



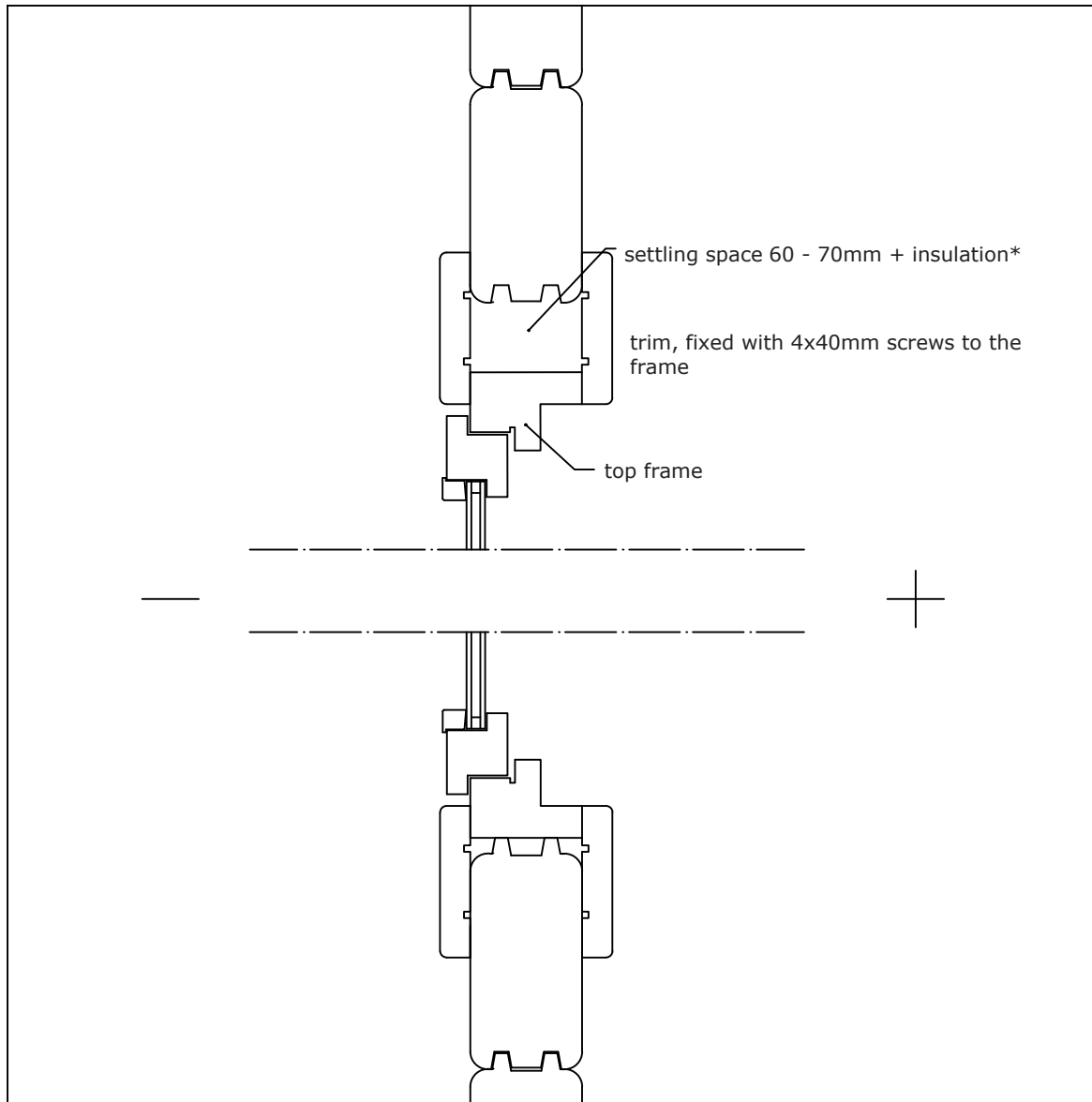
proj.
 Luoman 710-2 Koppelo

pvm./date

sisältö/description
 section, front door

mittakaava/scale

not in scale

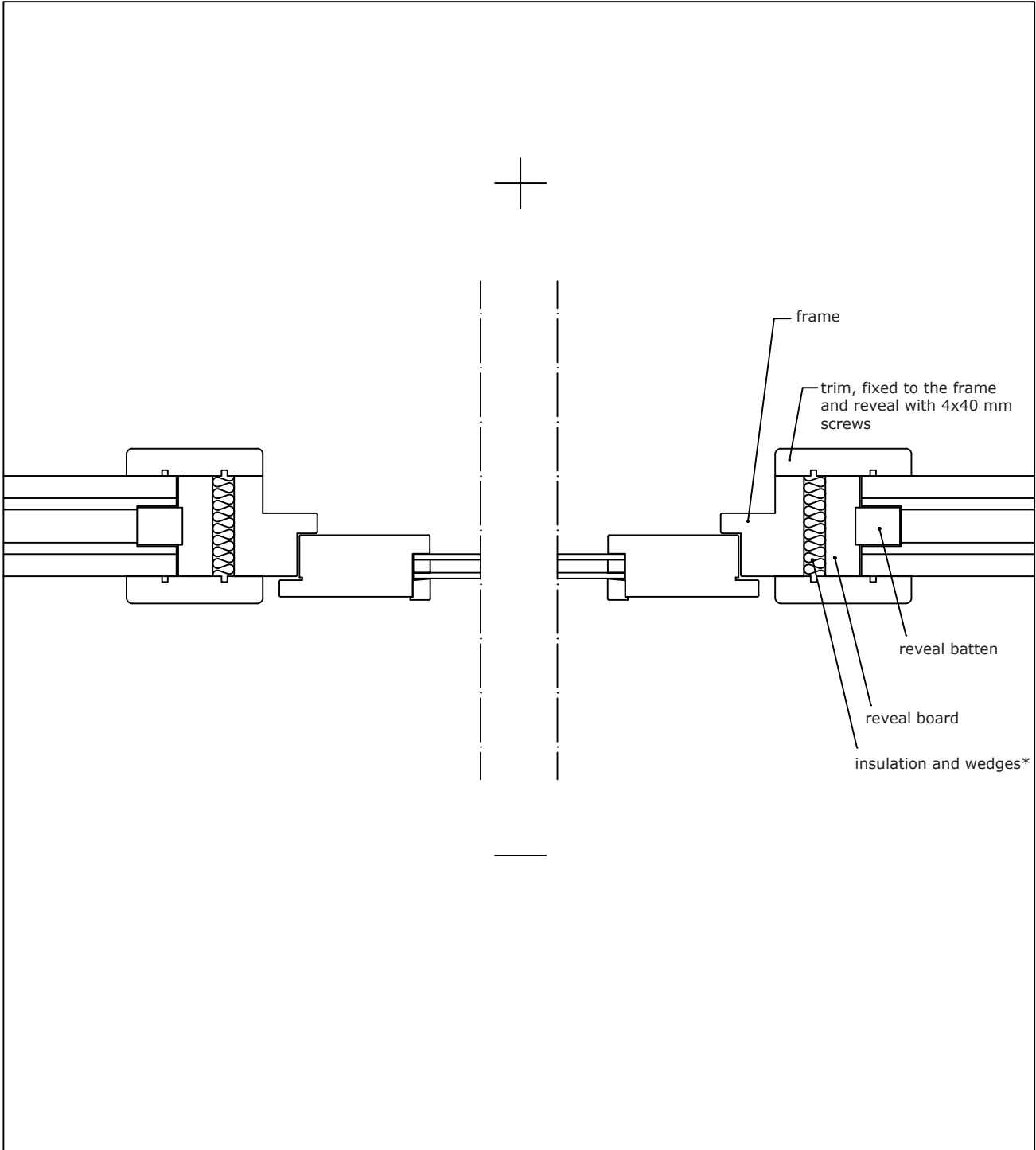


* not included

Luoman Puutuote Oy
www.lillevilla.com



proj.	pvm./date
Luoman 710-2 Koppelo	
sisältö/description	mittakaava/scale
section, window	not in scale



Luoman Puutuote Oy
www.lillevilla.com



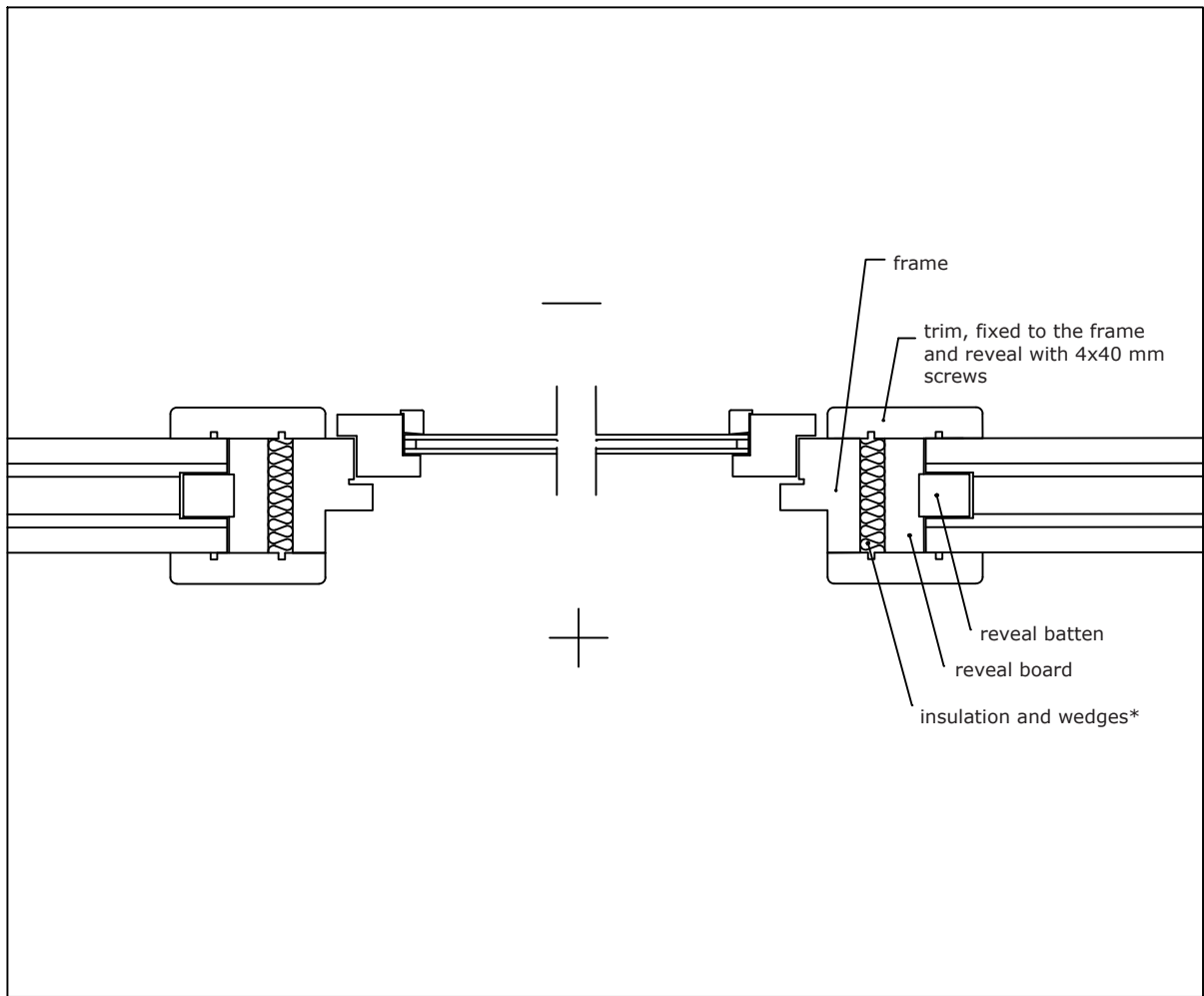
proj.
 Luoman 710-2 Koppelo

pvm./date

sisältö/description
 section, front door

mittakaava/scale

not in scale



Luoman Puutuote Oy
www.lillevilla.com



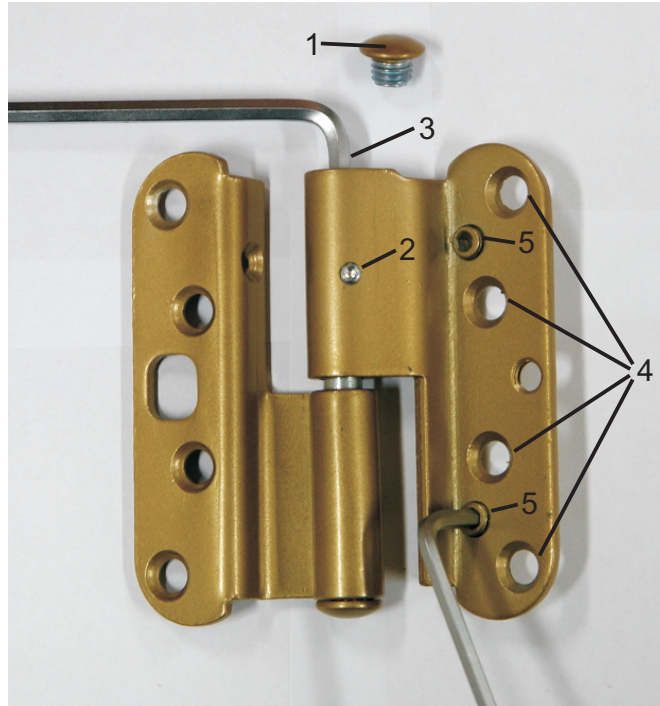
proj.
 Luoman 710-2 Koppelo

pvm./date

sisältö/description
 section, window

mittakaava/scale
 ei mittakaavassa

Adjusting the door hinges




Adjusting vertically

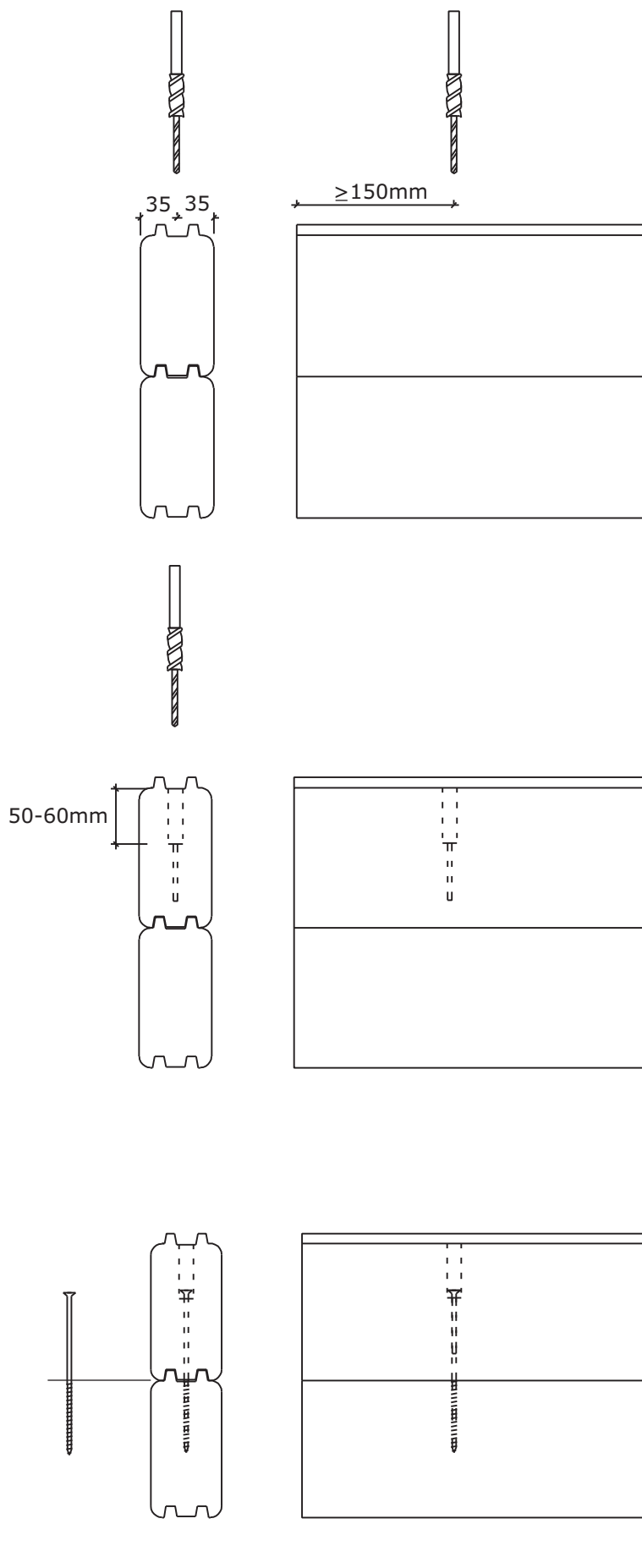
First screw off the covering hat of the hinge (1). Loosen the fixing screw if there is one (2). The door is lifted upwards by turning the adjustment screw clockwise with a hexagonal key AV5 (3). Adjust the hinges so that both of them are carrying the weight of the door. Finally, tighten the screw (2) and screw the covering hat in place.

Adjusting sideways

First loosen the fixing screws of the hinge of the door blade with a couple of turns (4). The door moves to the lock side by turning the adjusting screws (5) with a hexagonal key AV4 clockwise. It is important to adjust all the screws so that the hinge will be in correct position. When finished adjusting, tighten the fixing screws (4) again. The accessories bag contains extra adjustment plates for extra sideways adjustment needs.

The accessories bag contains adjustment plates for the hinges. If needed, the position and distance of the door from the side frame can be adjusted by mounting one or more adjustment plates under the hinge(s).

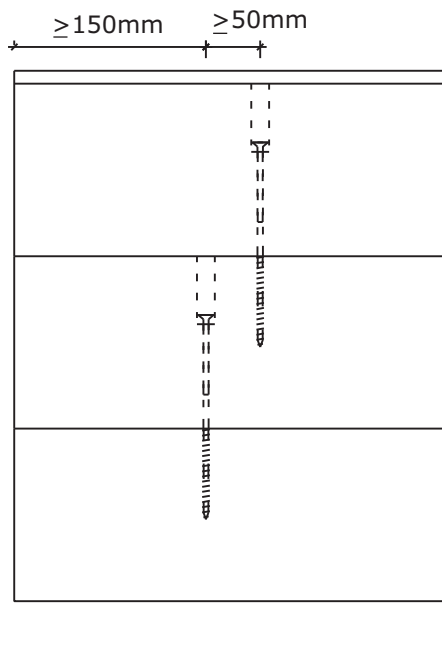
Designed by Luoman Puutuote Oy		Date	Project
		Scale Not in scale	Description Adjusting door hinges



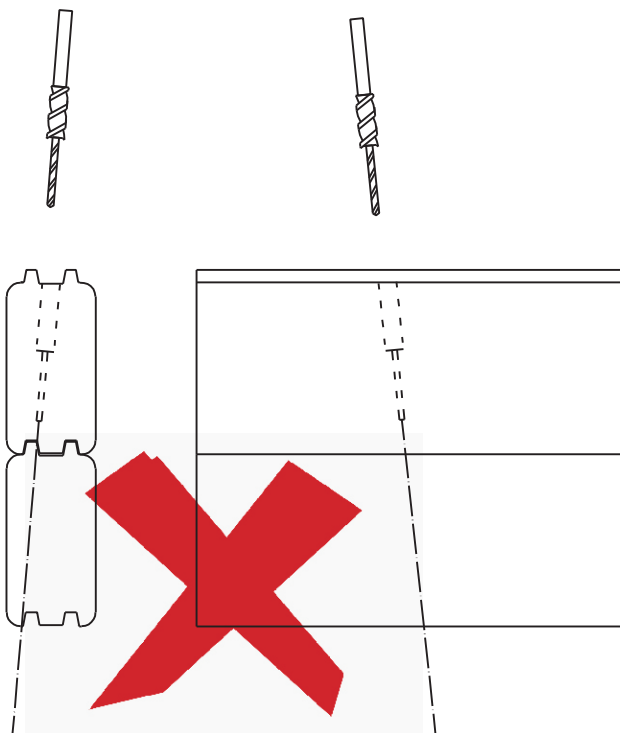
The screws shown in the wall drawings are installed as advised here.

Drill a starting hole to the log with the drill from the accessories bag according to the measurements and drawings shown here. Drill the hole perpendicularly. You can drill the holes before you lift the logs in place.

Install the log in place and screw the screw so deeply that the threaded part of it as a whole reaches the lower log.



Obey the minimum distances shown in the drawings.



The holes must be drilled perpendicularly!

List of parts



Luoman 710-2 Koppelo

Part	code	thickness	width	length	pcs	control
Floor board	L1	26	87	3855	68	
Skirting, moulding for ceiling *	L2	20	30	44 m		
Roof board *	K2a	21	87	3580	56	
Roof board *	K2b	21	87	2930	56	
Ceiling panel	K3a	16	87	1960	45	
Ceiling panel	K3b	16	87	3890	45	
Log	A1, B1	70	135	6200	19	
Log, groove for reveal	A2	70	135	3855	3	
Log, groove for reveal	A3	70	135	570	15	
Log, groove for reveal	A4	70	135	800	12	
Log, groove for reveal	A5	70	135	1790	12	
Log, cut-out for door	A6	70	135	6200	1	
Log, cut-out for roof beam	A7, B2	70	135	6200	2	
Log, bevelled	A8,B3	70	135	170	2	
Log, bevelled	A10,B5	70	135	170	2	
Log, bevelled	A9,B4	70	135	587	18	
Log, pre-drilled	C1, D1	70	65	4200	2	
Log, pre-drilled	C2, D2	70	135	4200	34	
Log for gable triangle, pre-drilled	C3, D3	70	135/50	4200	2	
Log for gable triangle, pre-drilled	C4, D4	70	135	3375	2	
Log for gable triangle, pre-drilled	C5, D5	70	135	2065	2	
Log for gable triangle, pre-drilled	C6, D6	70	78	755	2	
Log for spare parts use		70	135	4200	1	
Roof beam	K4	58	195	4800	10	
Floor beam	L3	40	145	3860	2	
Floor beam	L4	40	145	5775	8	
Support for fascia boards	K5	40	145	230	6	
Trim (frame board) *	O7	19	95	3900	8	
Fascia board *	K6	19	95	3300	16	
Support for fascia board *	K7	40	50	3300	8	
Reveal board *	O8	24	70	3900	2	
Reveal batten *	O9	27	30	3300	3	
Door, type D19, right	O1	47	817	1917	1	
Door, type D19, left	O2	47	810	1917	1	
Side frame, right	O3	45	56	1947	1	
Side frame, left	O4	45	56	1947	1	
Upper frame	O5	45	56	1697	1	
Treshold	O6	40	70	1697	1	
Window, type S, right	I1		552	1490	1	
Window, type S, left	I2		552	1490	1	
Window frame, type S	I3				1	
Threaded rod	T1			2500	5	
Set of accessories	T2				1	
Assembly blocks	T3	70	65	250	2	

* to be cut by customer

All measurements approximately. We reserve the right to make technical changes.